



## ZTX Series Automatic Transfer Switch Equipment

GE Zenith's ZTX Series switches are built for residential and light commercial applications requiring the dependability and ease of operation found in a power contactor switch.

- Ratings 40 to 400 amps (2, 3 and 4 pole)
- UL 1008, CSA and IEC listed to 480 VAC 50/60Hz
- Double throw, mechanically interlocked contactor mechanism
- Electrically operated, mechanically held
- Designed for standby applications

GE Zenith's ZTX switches are equipped with the R-M3 control panel (Module 3) as standard. This microprocessor control includes:

- Undervoltage sensing (90% pickup/80% dropout) of the utility source
- Voltage and frequency sensing of the generator source (90% voltage/95% frequency pickup)
- Time Delay Engine Start - 5 seconds (**P**)
- Time Delay Engine Warmup - Transfer to Generator - 20 seconds (**W**)
- Time Delay Utility Stabilization/Retransfer to Utility - 5 minutes (**T**)
- Time Delay Engine Cool Down - 5 minutes (**U**)

*All time delays are fixed.*

The unit is available in open type, NEMA 1 or NEMA 3R enclosures. The R-M4 control option (Module 4) adds a user interface and functionality, including:

- Indicating LEDs for power availability, switch position and load energized
- Pushbuttons for test, engine start (manual), generator exerciser and diagnostic reset

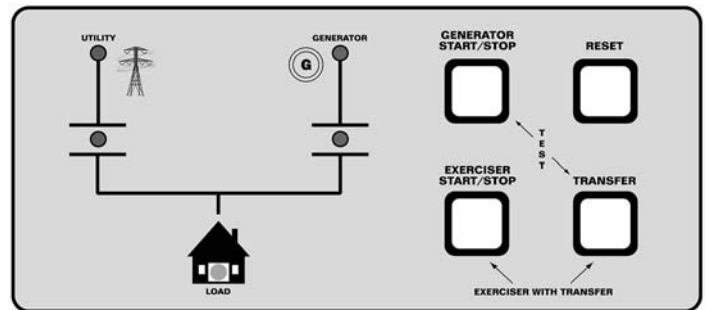


**ZTX Series Light Commercial Switch with R-M3 Control Panel (covers removed)**

- Selectable 7, 14, 21 or 28 day (factory set 28 days) generator exerciser timer
- Diagnostic LED indications

Additional options include:

- A3/A4** Auxiliary contacts (1 each) closed in utility and generator positions
- Special timer settings



**ZTX with R-M4 Microprocessor Control Panel**

## Ordering Information

Z T X

### Block A Base Model

Block B

### Block B Ampere Size

4 2 0  
40 amps 200 amps

8 2 2  
80 amps 225 amps

1 0 3 0  
100 amps 300 amps

1 5 4 0  
150 amps 400 amps

R \* \* \*

### Block C Control Panel

R M 3 \*

Microprocessor Control Panel  
Module 3 No Control Interface

R M 4 \*

Microprocessor Control Panel  
Module 4 with Interface

\* G \* \* \*

Enter the "G" Option  
if the Engine Crank  
Limiter Option is desired

Block D

### Block D Switched Poles

B  
2 Poles

E  
3 Poles

F  
4 Poles

Block F

### Block F Operational Voltage

2  
120/240V 1Ø, 3 wire, 60Hz

2 1  
120/208V 1Ø, 3 wire, 60Hz

3  
240V 3Ø, 3 wire, 60Hz

3 1  
208V 3Ø, 3 wire, 60Hz

3 2  
220V 3Ø, 3 wire, 50Hz

3 8  
120/240V 3Ø, 4 wire, 60Hz

4  
120/208V 3Ø, 4 wire, 60Hz

4 1  
127/220V 3Ø, 4 wire, 60Hz

5  
480V 3Ø, 3 wire, 60Hz

5 1  
440V 3Ø, 3 wire, 60Hz

5 2  
440V 3Ø, 3 wire, 50Hz

5 3  
440V 1Ø, 2 wire, 60Hz

7  
277/480V 3Ø, 4 wire, 60Hz

9  
240/416V 3Ø, 4 wire, 60Hz

9 1  
220/380V 3Ø, 4 wire, 60Hz

9 2  
220/380V 3Ø, 4 wire, 50Hz

9 3  
240/416V 3Ø, 4 wire, 50Hz

Block E

### Block E Enclosure Type

C  
NEMA 1 Enclosed

S  
NEMA 3R

X  
Open Style Unit

Block G

### Block G Accessories

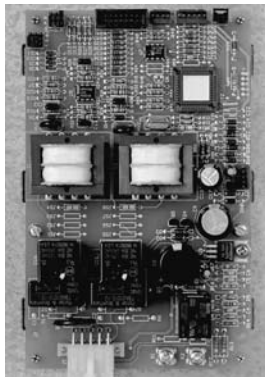
Then choose additional accessories

A3/A4

Auxiliary Contacts (1 each)  
Closed in Normal  
and Emergency

For information on GE Zenith's  
ZTX OEM plans, please  
consult our sales department.

## Technical Specifications



**R-M3 Control Panel**  
(Single phase  
version shown)

### Engine Cranking Limiter

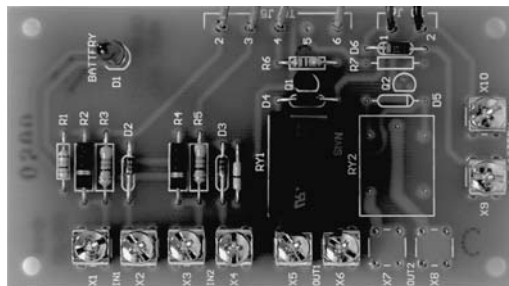
The ZTX Series is available with an engine cranking module. This accessory allows the engine to cycle crank 3 times with 2 rests (10 seconds each), then it disconnects the engine start function at the transfer switch if the engine fails to start.

Start signal disconnect also takes place on: overcrank, over-speed, high temperature, low oil pressure and if the generator circuit breaker is tripped or open.

Specify accessory module as required:

M3G — Module 3 with crank limiter

M4G — Module 4 with crank limiter (12 - 28 VDC range)



**Generator Crank Limiter Option**

### Lug Configuration

Amp Size	Standard Lugs
40-150	1 - #8 to 3/0 AWG per pole
200-225	1 - #6 to 250 MCM per pole
300-400	1 - #4 to 600 MCM per pole

### UL 1008 Withstand and Closing Ratings

Amp Size	Coordinated Molded Case Breakers	Current Limiting Fuse *
40-225	30,000	200,000
300-400	50,000	200,000

\* consult factory for application information

### Dimensions

Amp Size	NEMA 1	NEMA 3R
40-100	18 H x 18 W x 8 D	18 H x 18 W x 8 D
150-200	24 H x 18 W x 10 D	24 H x 18 W x 10 D
225	36 H x 24 W x 14 D	36 H x 24 W x 14 D
300-400	46 H x 24 W x 14 D	46 H x 24 W x 14 D